

THE **READING ROOM**

Welcome to Tower Saint John's Imaging's quarterly newsletter.
We hope you enjoy the view from inside **The Reading Room**.

FALL 2006

ADVANCES IN BREAST IMAGING



Two new breast imaging technologies are now available which are revolutionizing the field and will potentially benefit millions of women annually.

DIGITAL MAMMOGRAPHY involves the digital acquisition, processing, transmission and display of x-ray images. Compared with conventional film-screen mammography, digital imaging has many proven advantages including decreased patient dose, higher image contrast and resolution, decreased required breast compression pressure, computer aided analysis and soft copy review and archiving. The new state of the art



Selenia GE Digital Mammography unit used at Tower Saint Johns Breast Imaging Center is equipped with direct conversion detectors which provide maximum resolution and image quality. This technology provides the optimal pixel size for detection of fine details such as microcalcifications and spiculations, which are early signs of breast cancer. The Selenia Digital system is linked to an iCAD computer processing system which allows a computerized evaluation for all potential abnormalities which significantly increases the sensitivity of mammographic interpretation. In addition, the digital mammography system interfaces completely with a computerized reporting system to provide prompt result reporting.

sensitive for the detection of invasive breast cancer. The new GE I.5T MRI used at Tower Saint John's Imaging is equipped with exclusive technology to maximize the spatial resolution (high detail) and temporal resolution (ability to see changes in a short period of time). Following the intravenous administration of contrast material (gadolinium), hundreds of serial images are obtained and then analyzed with an advanced software system called CADstream. Color mapping characterizes changes in blood flow. Abnormal vessels seen in breast cancer can be identified, leading to the high sensitivity of MRI compared with mammography or physical exam. TSJI offers MRI guided breast biopsies, a service available at very few centers in Southern California.

Continued on Page 2

INDICATIONS FOR DIGITAL MAMMOGRAPHY:

Radiographically dense breasts
Pre/Peri Menopausal Women
Breast implants

BREAST MRI tumor evaluation is the second exciting new technology now available. Breast MRI promises to totally revolutionize the diagnosis and treatment of breast cancer. The procedure involves acquisition of multiple contrast enhanced images and has been proven nearly 100%

INSIDE: Meet Our Staff



Yoly, Ricardo and Claudia from the TSJI Medical Records Department

BREAST MRI FINDINGS NOT DETECTED BY CONVENTIONAL MAMMOGRAPHY

A CASE STUDY: BY DEBRA MUND, MD

A 75-year-old woman underwent a left mastectomy for invasive breast cancer in October 2004. Patient had a normal conventional mammogram in October 2005. Her breasts were mammographically dense. Given her high risk of contralateral breast cancer and dense tissue, she underwent a screening Breast MRI tumor study. The MRI revealed an unsuspected dominant mass in the right breast posterior 9:00 position. Subsequently, directed breast ultrasound identified the mass. Percutaneous ultrasound guided core bi-

opsy revealed invasive ductal carcinoma.

Figure 1: Sagittal computer subtraction image through the right outer breast at 5 minutes post injection of contrast shows an irregular mass with rapid uptake characteristic of an invasive breast cancer.

Figure 2: Computer reconstruction of the acquired data produces this axial image showing the precise location of the mass posteriorly.

An occult primary tumor was detected in the contralateral breast of this asymptomatic patient. This case illustrates both the limitation of conventional film screen mammography for dense breasts and the high sensitivity of Breast MRI. Compared with conventional film screen imaging, digital mammography has improved sensitivity. Although not a general screening test, the most sensitive method of detecting breast cancer today is Breast MRI.

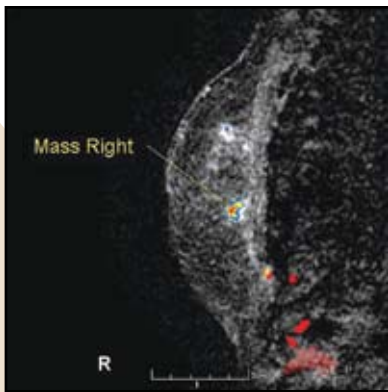


Figure 1

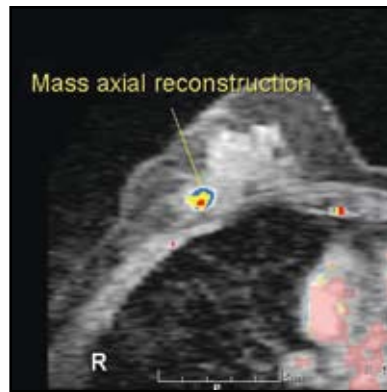


Figure 2

ADVANCES IN BREAST IMAGING

Continued from Page 1

INDICATIONS FOR BREAST MRI SCREENING

- High risk of breast cancer
- Assessment of known breast cancer before surgery
- Search for additional cancers in same breast or other breast
- Evaluation of indeterminate mammographic and/or ultrasound findings
- Assessment of effect of adjuvant chemotherapy
- Breast implants

MEET DR. DEBRA MUND

Dr. Debra Mund, a Breast Imaging Specialist with Tower Imaging Medical Group, graduated summa cum laude from the University of California, Los Angeles and received her Medical Degree from the University of California, San Francisco. Dr. Mund completed her medical internship, radiology residency and a fellowship in Breast Imaging at the University of California, Los Angeles.



Dr. Mund served most recently as a Breast Imaging Specialist at MEMRAD Medical Group in Long Beach and prior

to that as the Director of Breast Imaging at Queen of Angels Hollywood Presbyterian Medical Center.

Dr. Mund is certified by the American Board of Radiology and has received numerous honors and awards including awards for exhibits in Silicone and Saline Breast Implants:

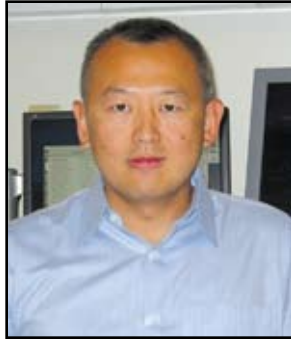
Spectrum of MR findings, presented at the National Medical Association Meeting in August 1993, and *Mammographic quality control from A to Z* presented at the 1993 Annual Meeting of the Radiologic Society of North America. She also received the Outstanding Leadership in Breast Imaging Award from Queen of Angels Hollywood Presbyterian Medical Center in 2001.

The Tower Imaging Breast specialists are uniquely qualified experts in all aspects of breast imaging and can therefore provide the most comprehensive imaging evaluation. Studies are analyzed in light of the patient's history, physical examination, and prior imaging. TSJI offers state-of-the-art equipment, highly experienced and trained professionals, and the ability to biopsy from every modality including MRI. Ultimately, our patients benefit from the most accurate recommendations and most specific diagnoses available today in breast imaging.

NEW TO OUR TEAM

DAVID CHOU, MD

Dr. David Chou was selected for the James Scholar Program at the University of Illinois, Chicago, where he received his medical doctorate. He completed his diagnostic radiology residency at University of California, San Diego. He also completed an MRI fellowship at UCSD under Drs. Bill Bradley and Don Resnick. Dr. Chou returned to Southern California after a year in Louisiana and joined Tower Imaging Medical Group in November 2005. He enjoys all aspects of magnetic resonance imaging especially musculoskeletal imaging.



Dr. Chou is a member of the American College of Radiology, the Radiological Society of North America, and Los Angeles Radiological Society.

NHAN TRAN, MD

Dr. Nhan Tran, a specialist in Neuroradiology and Internal Medicine, received his Medical Degree from Brown University School of Medicine in Providence, Rhode Island. Dr. Tran continued his training by completing an Internship in Internal Medicine at Beth Israel Deaconess Medical Center in Boston, Massachusetts, and his residency in Diagnostic Radiology at St. Luke's - Roosevelt Hospital Center New York, New York. Dr. Tran then completed a fellowship in Neuroradiology at Los Angeles County and USC Medical Center in Los Angeles.



Dr. Tran is certified by the American Board of Radiology in Diagnostic Radiology and is a member of the Radiological Society of North

America, the American College of Radiology, the American Roentgen Ray Society and the New York Roentgen Society.

*on the front
Beach front. An ocean view from
Ocean Avenue in Santa Monica.*



MEET OUR STAFF

Medical Records & Billing



SANDY

Sandy is the Department Lead for Medical Records. She manages the preferences each referring office has for receiving their patient's records and coordinates the delivery of all films, reports and CD's.

RICARDO

Ricardo has worked at both the reception desk and in Medical Records. He handles the incoming requests from both referring offices and patients for reports, films and CD's, and fills-in as courier, when needed.



CLAUDIA

Claudia is responsible for handling all of the medical records for mammography. She requests and processes outside films, prepares them for comparison, and processes the diagnostic call-backs for SJHC.

JORGE

Jorge makes medical records happen - rain or shine. Serving as our courier, he is responsible for making sure films, reports and CD's are delivered to referring physician offices quickly and efficiently.



YOLY

One of the newer members of the TSJI Medical Records team, Yoly is responsible for printing all patient films and sending exam images to CD. She also assists in the scheduling department, as needed.

JAIME

With us from the beginning, Jaime is all things billing. He is responsible for health insurance and payment questions and patient insurance verification. He edits and maintains patient information and processes all completed exam records for our billing company.



NEW REFERRAL FORMS

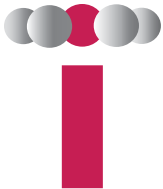


Tower Saint John's Imaging is currently delivering new exam request forms to referring offices. The new, full sheet, referral forms feature an easy-to-use, check-box style format that allows you to easily choose the exam your patient needs or to write-in an exam to your specifications. If your office doesn't yet have the new forms, if you need more, or if you have any questions, please call us at 310.264.4013.

Inside THE NEXT READING ROOM: Tower Saint John's Imaging celebrates its Second Anniversary!

WHY WAIT?

Tower Saint John's Imaging recognizes there are times when a patient may have a brief amount of time to wait prior to having their scheduled exam completed. During these times, TSJI strives to make each person as comfortable as possible by offering our non-prepped patients a coupon to enjoy food or refreshment at the New York Bagel Deli or by enjoying coffee or tea in our reception area.



**TOWER
SAINT JOHN'S
IMAGING**

Imaging by Specialists

2202 Wilshire Blvd.
Santa Monica, CA 90403
www.towersji.com

**contact us
310.264.9000**

**on the web
www.towersji.com**